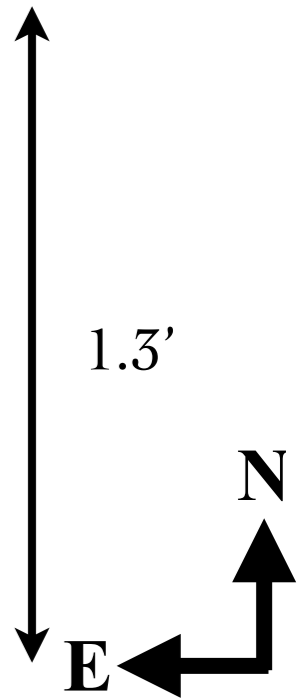
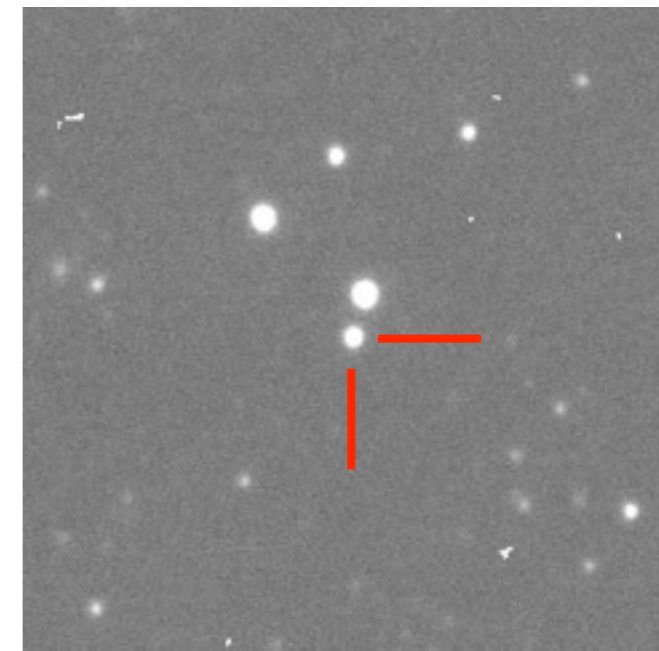
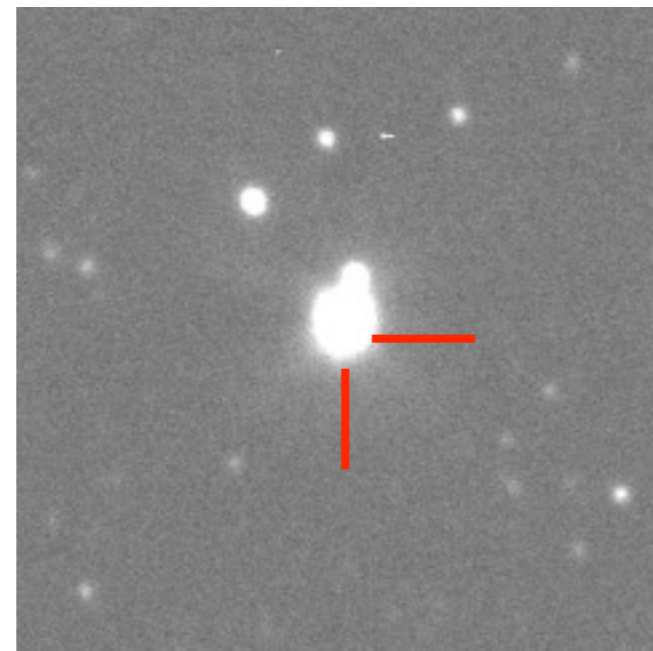
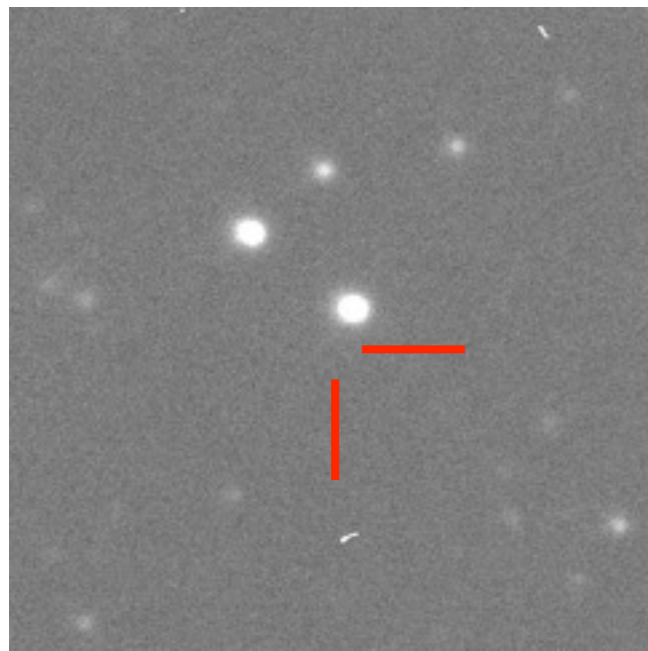


Possible Classical Nova towards the SMC

OGLE-2012-Nova-02

RA,Dec (J2000.0) = 0:32:55.06, -74:20:19.7 = 8.2294167, -74.3388056 deg

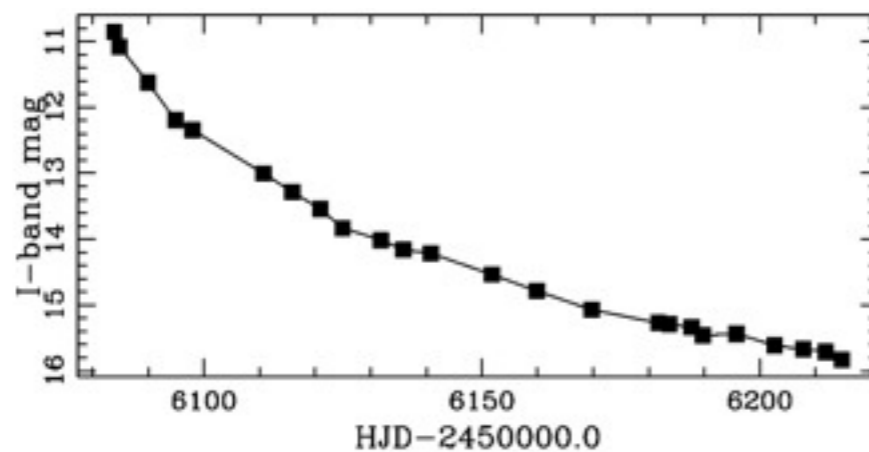


2012 Feb 24
limit ~ 21.3 mag
latest frame with no Nova

2012 Jun 05
 ~ 11 mag in I
first frame with Nova

2012 Oct 11
 ~ 16.5 mag in I

OGLE
photometry
in I-band:



Notes:

Possible classical nova in the SMC
>10 mag outburst,
time of explosion unconstrained,
before or on 5th of June 2012

Contacts: Łukasz Wyrzykowski, lw@astrouw.edu.pl
Andrzej Udalski, udalski@astrouw.edu.pl
Szymon Kozłowski, simkoz@astrouw.edu.pl

Internal OGLE designation: SMC714.19.5n